

Young People Not in Education, Employment or Training (NEET)

Steve Lambert

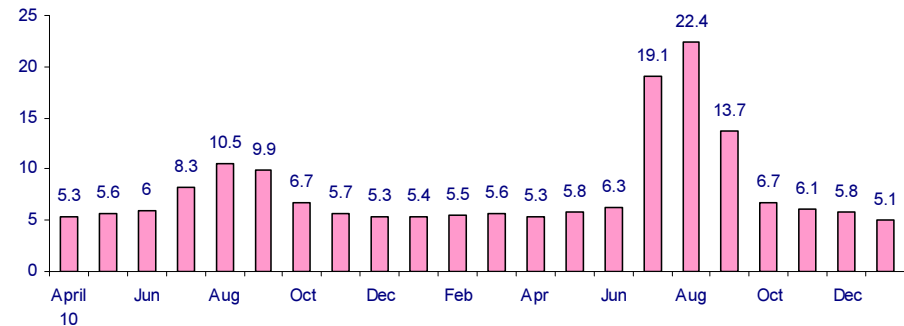
Learning, Development and Commissioning Manager



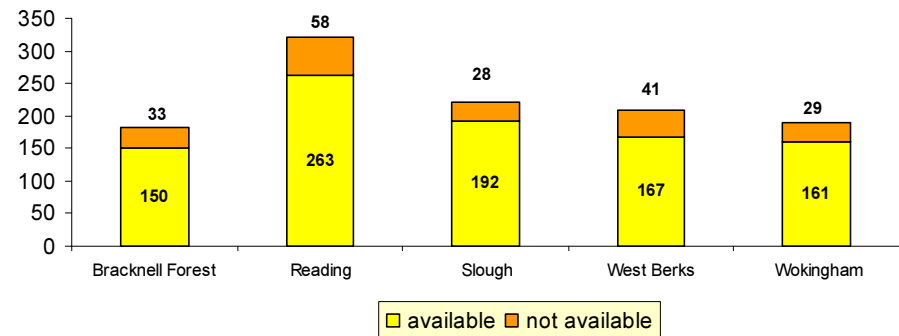
Current Position

- In 2010/11 the NEET figure was 6.1% - average of Nov '10, Dec '10 and Jan '11.
- Jan '12 figure was 5.1%
- The NEET group is not a static population, young people come into and out of the NEET group.
- The downturn in the economy has impacted on the NEET group, and the demographics of the cohort.
- Acknowledgement that not all young people want to progress into school or college.

Bracknell Forest Residency NEET from April 2010

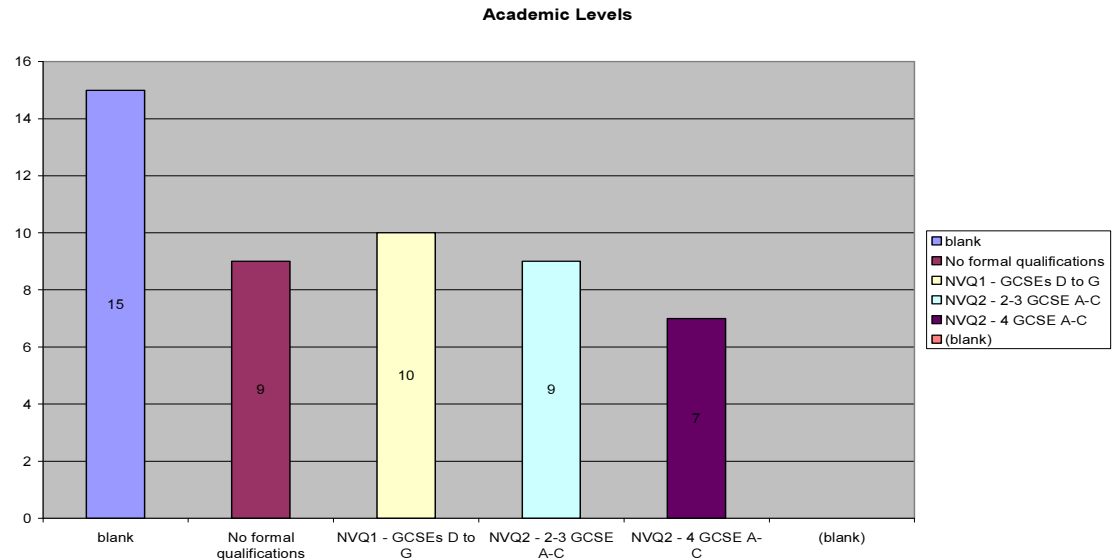


NEET Available and Not Available totals for each LA



Demographics of the cohort

- Now have much better data on the needs of this group.
- Approx. 30% of young people have level 2 qualifications.
- All NEET young people have been RAG rated against a criteria.
 - Green: level 1+ qualifications, employment/training ready: Possible apprenticeship route.
 - Amber: EL/level 1 qualification, not employment ready. Foundation Learning
 - Red: No formal qualification, multiple barriers to employment/engagement. 1:1 support



What are we doing about it?

NEET to EET

- **Participation Group**
 - Multi-agency group
 - Reviews the needs of Young People on an individual needs basis.
 - Considers those who are NEET and those at Risk of becoming NEET.
 - At risk using RONI and Local Intelligence
 - Transition Coordinator engaging with schools
- **Mainstream Provision**
 - School Sixth Form
 - College
 - Apprenticeship provision
- **Alternative Provision**
 - Foundation Learning Providers
 - Government funding the same as schools and colleges.
 - Offers provision at below level 2
 - More flexible provision



Work Pairing Programme

- Only other authority in the SE offering a similar programme is East Sussex.
- Combines 'work placement' and training on for between 3-5 days per week over a 3 to 6 month period.
- Treated like work: turn up, behave and undertake the tasks asked of them.
- Selected and interviewed based on their chosen occupational sector.
- All young people get a training allowance/bursary payment.
- On completion they would have sustained a period of 'work', receive qualifications, inc. Maths and English, and will receive a reference.
- Collaborative programme between:
 - *Bracknell Forest Council*
 - *Bracknell Forest Home*
 - *CfBT Include*
 - *Bracknell Forest Youth Service (mentor supporting the young people)*
 - *Connexions*
 - *Berkshire Scout Enterprises*



Going forward

- Continue using the Participation Group as an effective forum for coordinating NEET activity.
- Continue to develop the effectiveness of the working relationship with Youth Service, which currently includes:
 - Area Development Manager being an active member of the participation group
 - Member of Youth Service team engaged in the Work Pairing programme
 - Coordinating a joined up approach to delivery, avoiding significant service overlap
- Continue to work effectively with our provider network to secure sustainable provision for young people who are either NEET or At-Risk of becoming NEET.
- Continue to work with other areas of the Local Authority to ensure that Bracknell Forest provides opportunities for all young people.
 - Apprenticeship opportunities promoted through procurement
 - Work Placement through Corporate HR
 - Engaging with the Economic Skills Development Group



Questions

